

U-B-O-O-A-T

I T A L O F O N T A N A



U-BOAT
ITALO FONTANA

COLLECTION

CAPSOIL • 06

CHIMERA • 10

CLASSICO • 14

DARKMOON • 26

DIVE WATCH • 52

CAPSULE • 64

LADY • 72

SPECIAL EDITION • 76

CUSTOM-MADE • 86



THE STORY - LUCCA 1942

The first U-BOAT watch was created 20 years ago by Italo Fontana inspired by a model designed in 1942 by his grandfather Ilvo, for the Italian naval military forces, but never produced. It was an impressive diving watch characterized by the crown for the hands positioning placed on the left side. By perfecting and implementing the technical features of the U-BOAT watches, Italo Fontana has succeeded in creating a unique style and capturing the wrists of many celebrities.



INSPIRATION AND CREATIVITY

U-BOAT, relying on the Tuscan designer's dynamic creativity, has developed, in addition to the iconic crown on the left, a series of innovations such as the use of tungsten, the hardest of all materials, as well as the introduction of a patented system for the crown releasing from its stop position.

CAPSOIL

OIL IMMERSION

CAPSOIL overcomes the boundaries of traditional design by combining innovative lines with a retro taste. The Swiss electromechanical movement is completely surrounded by a low viscosity lubricating oil. The oily liquid wraps around the dial and turns it into an absolute black making it three-dimensional and deep.

This fluid creates a compensation bubble always on the move, as well as offering a surprising amplified vision of the hands, which seem to float free as in the absence of glass.



CAPSOIL

CHRONO 45MM DLC

REF. 8109/E



45 mm case with black DLC treatment, CAPSOIL features an electromechanics, with chrono functions, completely filled with an oil bath. The oily liquid, surrounding the dial, transforms it into an absolute black, making it three-dimensional and deep. This fluid creates on the dial an ever-moving compensation bubble. This new version features an innovative locking system (Locking Ring System) with quick battery replacement.

MOVEMENT

swiss electro-mechanical movement lubricated through an oil bath, personalized to U-BOAT specifications.

FUNCTIONS

hours, minutes, seconds, chronograph, screw crown.

CASE

AISI 316L stainless steel with subsequent black DLC treatment, completely filled with a special oil that emphasizes the dial, creating the illusion of the absence of glass, and an optical effect of a more intense black and higher legibility. Visible air bubble on the dial to compensate the temperature variations. Distinguishing crown on left side. 45 mm diameter.

BACK

innovative locking system (Locking Ring System) with quick battery replacement.

DIAL

two superimposed layers, black. Hands, numbers and indexes treated with superluminova in beige colour, visible tightening screws.

CRYSTAL

high quality curved sapphire.

WATER RESISTANCE

100 mt, 10 ATM.

STRAP

ultra-resistant vulcanised rubber, in black colour. Tongue buckle in steel with subsequent DLC treatment.

Width: 22/20 mm.

STRAP: ref. 3001/Z - BUCKLE: ref. 5467/MATT/SCREW

Working between 0°/+60° when not worn.

PRICE:

CAPSOIL

CHRONO 45MM SS

REF. 8111/E



45 mm stainless steel case, CAPSOIL features an electromechanics, with chrono functions, completely filled with an oil bath. The oily liquid, surrounding the dial, transforms it into an absolute black, making it three-dimensional and deep. This fluid creates on the dial an ever-moving compensation bubble. This new version features an innovative locking system (Locking Ring System) with quick battery replacement.

MOVEMENT

swiss electro-mechanical movement lubricated through an oil bath, personalized to U-BOAT specifications.

FUNCTIONS

hours, minutes, seconds, chronograph, screw crown.

CASE

AISI 316L stainless steel, completely filled with a special oil that emphasizes the dial, creating the illusion of the absence of glass, and an optical effect of a more intense black and higher legibility. Visible air bubble on the dial to compensate the temperature variations. Distinguishing crown on the left side. 45 mm diameter.

BACK

innovative locking system (Locking Ring System) with quick battery replacement.

DIAL

two superimposed layers, black. Hands, numbers and indexes treated with superluminova in beige colour, visible tightening screws.

CRYSTAL

high quality curved sapphire.

WATER RESISTANCE

100 mt, 10 ATM.

STRAP

ultra-resistant vulcanised rubber, in black colour. Steel tongue buckle.

Width: 22/20 mm.

STRAP: ref. 3001/Z - BUCKLE: ref. 5466/MATT/SCREW

Working between 0°/+60° when not worn.

PRICE:



CHIMERA

Iconic case, crown cover and pushers decisively mark the bold identity of the U-BOAT brand.

CHIMERA

46MM CHRONO SS

REF. 9589-9591-9592
300 PCS LIMITED EDITION



REF. 9589

REF. 9591

REF. 9592

MOVEMENT

mechanical automatic chronograph Sellita SW 500.

FUNCTIONS

hours, minutes, seconds, chronograph, date, 24h indicator. Patented crown release lever, positioned at 8:30 (Crown Release System).

CASE

made of AISI 316L steel. The closure between the polished tungsten bezel and the caseback is achieved through external lugs linked to the caseback. Special type lug screws with customized key. Large screw-down crown cover to ensure maximum water resistance. Side window in smoked mineral glass. 46 mm diameter.

BACK

closed with 5 screws screwed to the bezel with smoked mineral glass opening for movement view.

PRICE:

DIAL

two overlapping levels. Upper part in blue painted striped metal dial for ref. 9589, in green painted striped metal dial for ref. 9591 and in black painted striped metal dial for ref. 9592. Numbers, indexes and counters with laser cutting. Lower part in smoked sapphire. Hour and minute hands in brushed and painted metal with laser cutting. Seconds hand and 24h indicator in brushed and painted metal.

CRYSTAL

high quality optical sapphire crystal with anti-reflective treatment.

WATER RESISTANCE

100 mt, 10 ATM.

STRAP

laser-cut aged leather with natural process, black color for ref. 9589 and ref. 9592 and brown color for ref. 9591. Handmade in Tuscany by expert craftsmen, with careful selection of leathers and materials and entirely Italian processing. Waxed cotton stitching. Width: 22/22 mm.

STRAP: ref. 9185/Z (ref. 9589 and ref. 9592); ref. 9186/Z (ref. 9591) - BUCKLE: ref. 9976 for all three models.

CHIMERA

46MM SS

REF. 9602-9604-9605
300 PCS LIMITED EDITION



REF. 9602

REF. 9604

REF. 9605

MOVEMENT

swiss automatic mechanical ETA 2824 Top Soigné.

FUNCTIONS

hours, minutes, seconds, date, 24h indicator. Patented crown release lever, positioned at 10 o'clock (Crown Release System).

CASE

made of AISI 316L steel. The closure between the polished tungsten bezel and the caseback is achieved through external lugs linked to the caseback. Special type lug screws with customized key. Large screw-down crown cover to ensure maximum water resistance. 46 mm diameter.

BACK

closed with 5 screws screwed to the bezel with smoked mineral glass opening for movement view.

PRICE:

DIAL

two overlapping levels. Upper part in blue painted striped metal dial for ref. 9602, in green painted striped metal dial for ref. 9604 and in black painted striped metal dial for ref. 9605. Numbers, indexes and indicator with laser cutting. Lower part in brushed metal. Hour and minute hands in brushed and painted metal with laser-cutting. Seconds hand and 24h indicator in brushed and painted metal.

CRYSTAL

high quality optical sapphire crystal with anti-reflective treatment.

WATER RESISTANCE

100 mt, 10 ATM.

STRAP

laser-cut aged leather with natural process, black color for ref. 9602 and ref. 9605 and brown color for ref. 9604. Handmade in Tuscany by expert craftsmen, with careful selection of leathers and materials and entirely Italian processing. Waxed cotton stitching. Width: 22/22 mm.

STRAP: ref. 9185/Z (ref. 9602 and ref. 9605); ref. 9186/Z (ref. 9605) - BUCKLE: ref. 9976 for all three models.



CLASSICO

It captures the essence of style, with pure and iconic lines, a timeless design with innate elegance.

CLASSICO

45MM TITANIUM TUNGSTEN BLACK RIGHT HOOK

REF. 3005
NUMBERED AND LIMITED EDITION OF 99 PCS



Every shade of the dial turns the Classic into a masterpiece of design and craftsmanship. A watch crafted from titanium and tungsten, exceptionally featuring a crown on the right, designed for lefthanders and for those who seek emotion and character in every second preferring to wear their watch on the right wrist.

MOVEMENT
mechanical automatic chronograph movement

FUNCTIONS
hours, minutes, seconds, chronograph function, date, 24-hour indicator, crown cover.

CASE
titanium grade 2. Matt tungsten bezel. Crown at 3 o'clock. Crown extraction lever at 3:30. Diameter 45 mm.

CASE BACK
titanium. Closed with 7 screws. U-shaped opening with sapphire crystal movement view.

DIAL
three-level black metal with upper with "carrès" pattern. Indexes and numerals treated with grey superluminova. Metal hands painted with gray superluminova treatment. 24-hour hand in red.

CRYSTAL
high quality sapphire with anti reflective treatment.

WATER RESISTANCE
100 mt, 10 ATM.

STRAP
in laser- engraved leather. Handcrafted in Tuscany by skilled artisans, with a meticulous selection of leathers and materials and entirely Italian workmanship. Titanium tongue buckle.
Width: 22/20 mm.
STRAP: ref. 3993/Z - BUCKLE: ref. 5459/screw



PRICE:

CLASSICO

45MM CRONO TUNGSTENO

REF. 3002-3003-3004
NUMBERED AND LIMITED EDITION OF 299 PCS



REF. 3002

REF. 3003

REF. 3004

MOVEMENT
mechanical automatic chronograph movement.

FUNCTIONS
hours, minutes, seconds, chronograph function, date, 24-hour indicator, crown cover.

CASE
titanium grado 2. Matt tungsten bezel. Crown extraction lever at 8:30. 45 mm diameter.

CASE BACK
titanium. Closed with 7 screws. U-shaped opening with sapphire crystal movement view.

DIAL
three-level gray metal with upper with "waffle" pattern for ref. 3002, three-level blu metal with upper with "waffle" pattern for ref. 3003, three-level black metal

with upper with "waffle" pattern for ref. 3004. Indexes and numerals treated with black superluminova. Metal hands painted with black superluminova treatment. 24-hour hand in red. ref. 3002, ref. 3003 e ref. 3004.

CRYSTAL
sapphire with anti-reflective treatment.

WATER RESISTANCE
100 mt, 10 ATM.

STRAP
in Alcantara rubber with leather lining. Handcrafted in Tuscany by skilled artisans, with a meticulous selection of leathers and materials and entirely Italian workmanship. Stitched with waxed cotton. Titanium tongue buckle. **Width:** 22/20 mm.
STRAP: ref. 3993/22/20/Z - BUCKLE: ref. 5459/screw

PRICE:

CLASSICO

45MM CRONO TUNGSTENO CAS1

REF. 9567/A-9568/A-9581/A



REF. 9567/A

REF. 9568/A

REF. 9581/A

MOVEMENT
mechanical automatic chronograph movement.

FUNCTIONS
hours, minutes, seconds, chronograph function, date, 24-hour indicator, crown cover.

CASE
AISI 316L steel. Polished tungsten bezel. Crown extraction lever at 8:30. 45 mm diameter.

CASE BACK
steel. Closed with 7 screws. U-shaped opening with sapphire crystal for movement view.

DIAL
black metal for ref. 9567; beige metal for ref. 9568 and green metal for ref. 9581. Three-level. Indexes and numerals treated with beige superluminova for

ref. 9567 e 9581 and black superluminova for ref. 9568. Metal hands painted with beige superluminova treatment for ref. 9567 e 9581; and black superluminova treatment for ref. 9568. Red 24-hour hand.

CRYSTAL
sapphire with anti-reflective treatment.

WATER RESISTANCE
100 mt, 10 ATM.

STRAP
lasered leather aged with natural process, dark brown color for ref. 9567; cognac color for ref. 9568 and black color for ref. 9581. Handmade in Tuscany by expert craftsmen. Waxed cotton stitches. Steel tongue buckle. **Width:** 20/20 mm.

STRAP: ref. 9573/Z (ref. 9567); ref. 9691/Z (ref. 9568); 9690/Z (9581) - **BUCKLE:** ref. 4879 for all three models

PRICE:

CLASSICO

42MM TUNGSTENO BEIGE

REF. 8892



Class and elegance to wear. Iconic design and essential lines for the new Classico 42 Tungsten.

MOVEMENT
automatic mechanical.

FUNCTIONS
hours, minutes, seconds, date, 24 h counter.

CASE
AISI 316L steel with polished tungsten bezel. Diameter 42 mm.

BACK
in mineral glass sealed by 6 screws.

DIAL
three-layer beige dial with visible ruby. Indexes and numbers treated with black superluminova, light metal spheres, beige painted, with black superluminova.

CRYSTAL
high quality sapphire with anti reflective treatment.

WATER RESISTANCE
100 mt, 10 ATM.

STRAP
brown, in laser-cut leather, aged through natural process. Handmade in Tuscany by expert craftsmen. Seams in waxed cotton. Shiny steel tongue buckle. **Width:** 20/18 mm. **STRAP:** ref. 9355/Z - **BUCKLE:** ref. 7019/SHINY/MATT



PRICE:

CLASSICO

42MM TUNGSTENO BLACK

REF. 8893

Class and elegance to wear.
Iconic design and essential lines for the new Classico 42 Tungsten.

MOVEMENT
automatic mechanical.

FUNCTIONS
hours, minutes, seconds, date, 24 h counter.

CASE
AISI 316L steel with polished tungsten bezel. Diameter 42 mm.

BACK
in mineral glass sealed by 6 screws.

DIAL
three-layer black dial with visible ruby. Indexes and numbers treated with beige superluminova, light metal spheres, black painted, with beige superluminova.

CRYSTAL
high quality sapphire with anti reflective treatment.

WATER RESISTANCE
100 mt, 10 ATM.

STRAP
brown, in laser-cut leather, aged through natural process. Handmade in Tuscany by expert craftsmen. Seams in waxed cotton. Shiny steel tongue buckle.
Width: 20/18 mm.
STRAP: ref. 9356/Z - BUCKLE: ref. 7019/SHINY/MATT



PRICE:

CLASSICO

U-47 47MM ASI

REF. 8105

Designed for men and women with strong personalities.

MOVEMENT
automatic mechanical.

FUNCTIONS
hours, minutes, seconds, date.

CASE
AISI 316L stainless steel, satin hand finish. Diameter 47 mm.

BACK
screwed in. Fumé glass showing the movement.

DIAL
black with visible ruby. Hands, numbers and indexes treated with superluminova in beige colour.

CRYSTAL
high quality sapphire with anti reflective treatment.

WATER RESISTANCE
100 mt, 10 ATM.

STRAP
brown, in laser-cut leather, aged through natural process. Handmade in Tuscany by expert craftsmen. Steel tongue buckle.
Width: 23/22 mm.
STRAP: ref. 9181/Z - BUCKLE: ref. 1763/SCREW



PRICE:

CLASSICO

U-47 47MM AS2

REF. 8106



A model that captures the essence of style, with pure and iconic lines. The Classic with character. Equipped with a crown on the left side with a patented protection device, 47 mm case, a serial number that makes each watch unique. A watch with an innate, timeless elegance.

MOVEMENT

automatic mechanical.

FUNCTIONS

hours, minutes, seconds, date.

CASE

AISI 316L stainless steel, satin hand finish, distinguishing crown on left side, with a patented protective device. Diameter 47 mm. Serial number engraved on a small plate placed on the side of the case.

BACK

screwed in. Fumé glass showing the movement.

DIAL

three superimposed layers, beige with visible ruby. Arabic numerals. Luminous hands, numbers and markers.

CRYSTAL

high quality sapphire with anti reflective treatment.

WATER RESISTANCE

100 mt, 10 ATM.

STRAP

brown, in laser-cut leather, aged through natural process. Handmade in Tuscany by expert craftsmen. Steel tongue buckle with DLC treatment.

Width: 23/22 mm.

STRAP: ref. 9181/Z - BUCKLE: ref. 1763/SCREW

PRICE:

CLASSICO

U-47 47MM AB1

REF. 9160



Pure and iconic lines.

This Classico boasts a 47 mm steel case with DLC treatment. A watch with innate and timeless elegance.

MOVEMENT

automatic mechanical.

FUNCTIONS

hours, minutes, seconds, date.

CASE

AISI 316L stainless steel with subsequent black DLC treatment. Diameter 47 mm. Serial number engraved on a small plate placed on the side of the case.

BACK

screwed in. Fumé glass showing the movement.

DIAL

three superimposed layers, black with visible ruby. Hands, numbers and indexes treated with superluminova in beige colour.

CRYSTAL

high quality sapphire with anti reflective treatment.

WATER RESISTANCE

100 mt, 10 ATM.

STRAP

black, in laser-cut leather, aged through natural process. Handmade in Tuscany by expert craftsmen. Steel tongue buckle with DLC treatment.

Width: 23/22 mm.

STRAP: ref. 9385/Z - BUCKLE: ref. 1764/SCREW

PRICE:

CLASSICO

U-47 47MM BRONZE

REF. 7797

Uncoated bronze, material naturally changing with time, making each timepiece unique.

MOVEMENT
automatic mechanical.

FUNCTIONS
hours, minutes, seconds, date.

CASE
in aged bronze. Diameter 47 mm.

BACK
screwed in. Fumé glass showing the movement, special anticorrosive antiqued treatment.

DIAL
three superimposed layers, matt black with visible ruby. Hands, numbers and indexes treated with superluminova in beige colour.

CRYSTAL
high quality sapphire with anti reflective treatment.

WATER RESISTANCE
100 mt, 10 ATM.

STRAP
brown calf leather. Tongue buckle in bronze with special anticorrosive antiqued treatment.
Width: 23/22 mm.
STRAP: ref. 9183/Z - BUCKLE: ref. 8142



PRICE:





D A R K M O O N

A collection coming from the moon, directly from its darker side. Following the idea explored for the first time with the CAPSOIL model, DARKMOON further explores the innovative "Oil Immersion" concept.

DARKMOON

41,50MM BLACK PVD

REF. 9019/B



The Oil Immersion concept and the soleil treatment in the smaller size of 41,50 mm. A new dimension in time directly on your wrist.

MOVEMENT

the Swiss precision of the Ronda 762 quartz movement, lubricated with oil bath.

FUNCTIONS

hours, minutes, screw-down crown.

CASE

AISI 316L stainless steel with subsequent PVD treatment, completely filled with a special oil that emphasizes the dial. Diameter 41,50 mm.

BACK

innovative locking system (Locking Ring System) with quick battery replacement. Laser-engraved serial number and QR code. Scanning the QR code grants access to an exclusive digital experience.

DIAL

black painted metal. Hands, numbers and indexes treated with luminova in beige colour.

CRYSTAL

high quality curved sapphire.

WATER RESISTANCE

50 mt, 5 ATM.

STRAP

ultra-resistant vulcanised rubber, in black colour, personalised with the logo of the Maison in relief. Strap equipped with a new system for easy detachment from the watch lugs, no longer secured with screws. Tongue buckle in steel with subsequent PVD treatment.

Width: 20/18 mm.

STRAP: ref. 3991/Z - BUCKLE: ref. 7018/MATT

Take care of your watch. Working between 0°/+60° when not worn.

PRICE:

DARKMOON

41,50MM BLACK SS

REF. 9018/B



The Oil Immersion concept and the soleil treatment in the smaller size of 41,50 mm. A new dimension in time directly on your wrist.

MOVEMENT

the Swiss precision of the Ronda 762 quartz movement, lubricated with oil bath.

FUNCTIONS

hours, minutes, screw-down crown.

CASE

AISI 316L stainless steel, completely filled with a special oil that emphasizes the dial. Diameter 41,50 mm.

BACK

innovative locking system (Locking Ring System) with quick battery replacement. Laser-engraved serial number and QR code. Scanning the QR code grants access to an exclusive digital experience.

DIAL

black painted metal. Hands, numbers and indexes treated with luminova in beige colour.

CRYSTAL

high quality curved sapphire.

WATER RESISTANCE

50 mt, 5 ATM.

STRAP

ultra-resistant vulcanised rubber, in black colour, personalised with the logo of the Maison in relief. Strap equipped with a new system for easy detachment from the watch lugs, no longer secured with screws. Steel tongue buckle.

Width: 20/18 mm.

STRAP: ref. 3991/Z - BUCKLE: ref. 7019/SS

Take care of your watch. Working between 0°/+60° when not worn.

PRICE:

DARKMOON

41,50MM GREEN PVD SOLEIL

REF. 9503/B



Your time in colour directly on your wrist. 41,50 mm stainless steel PVD case, Oil Immersion concept, and soleil green dial that fades into a full black.

MOVEMENT

the Swiss precision of the Ronda 762 quartz movement, lubricated with oil bath.

FUNCTIONS

hours, minutes, screw-down crown.

CASE

AISI 316L stainless steel with subsequent PVD treatment, completely filled with a special oil that emphasizes the dial. Diameter 41,50 mm.

BACK

innovative locking system (Locking Ring System) with quick battery replacement. Laser-engraved serial number and QR code. Scanning the QR code grants access to an exclusive digital experience.

DIAL

green metal with brushed soleil finishing. Hands, numbers and indexes treated with superluminova in beige colour.

CRYSTAL

high quality curved sapphire.

WATER RESISTANCE

50 mt, 5 ATM.

STRAP

ultra-resistant vulcanised rubber, in black colour, personalised with the logo of the Maison in relief. Strap equipped with a new system for easy detachment from the watch lugs, no longer secured with screws. Tongue buckle in steel with subsequent PVD treatment.

Width: 20/18 mm.

STRAP: ref. 3991/Z - BUCKLE: ref. 7018/MATT

Take care of your watch. Working between 0°/+60° when not worn.

PRICE:

DARKMOON

41,50MM GREEN SS SOLEIL

REF. 9502/B



Your time in colour directly on your wrist. 41,50 mm satin stainless steel, Oil Immersion concept, and soleil green dial that fades into a full black.

MOVEMENT

the Swiss precision of the Ronda 762 quartz movement, lubricated with oil bath.

FUNCTIONS

hours, minutes, screw-down crown.

CASE

AISI 316L stainless steel, completely filled with a special oil that emphasizes the dial. Diameter 41,50 mm.

BACK

innovative locking system (Locking Ring System) with quick battery replacement. Laser-engraved serial number and QR code. Scanning the QR code grants access to an exclusive digital experience.

DIAL

green metal with brushed soleil finishing. Hands, numbers and indexes treated with superluminova in beige colour.

CRYSTAL

high quality curved sapphire.

WATER RESISTANCE

50 mt, 5 ATM.

STRAP

ultra-resistant vulcanised rubber, in black colour, personalised with the logo of the Maison in relief. Strap equipped with a new system for easy detachment from the watch lugs, no longer secured with screws. Steel tongue buckle.

Width: 20/18 mm.

STRAP: ref. 3991/Z - BUCKLE: ref. 7019/SS

Take care of your watch. Working between 0°/+60° when not worn.

PRICE:

DARKMOON

41,50MM BLUE PVD

REF. 9020/C



The Oil Immersion concept and the soleil treatment in the smaller size of 41,50 mm. A new dimension in time directly on your wrist.

MOVEMENT

the Swiss precision of the Ronda 762 quartz movement, lubricated through an oil bath.

FUNCTIONS

hours, minutes, screw-down crown.

CASE

AISI 316L stainless steel with subsequent PVD treatment, completely filled with a special oil that emphasizes the dial. Diameter 41,50 mm.

BACK

innovative locking system (Locking Ring System) with quick battery replacement. Laser-engraved serial number and QR code. Scanning the QR code grants access to an exclusive digital experience.

DIAL

curved blue metal with brushed soleil finishing. Hands, numbers and indexes treated with luminova in beige colour.

CRYSTAL

high quality curved sapphire.

WATER RESISTANCE

50 mt, 5 ATM.

STRAP

ultra-resistant vulcanised rubber, in black colour, personalised with the logo of the Maison in relief. Strap equipped with a new system for easy detachment from the watch lugs, no longer secured with screws. Tongue buckle in steel with subsequent PVD treatment.

Width: 20/18 mm.

STRAP: ref. 3991/Z - BUCKLE: ref. 7018/MATT

Take care of your watch. Working between 0°/+60° when not worn.

PRICE:

DARKMOON

41,50MM BLUE SS

REF. 9021/C



The Oil Immersion concept and the soleil treatment in the smaller size of 41,50 mm. A new dimension in time directly on your wrist.

MOVEMENT

the Swiss precision of the Ronda 762 quartz movement, lubricated through an oil bath.

FUNCTIONS

hours, minutes, screw-down crown.

CASE

AISI 316L stainless steel with subsequent PVD treatment, completely filled with a special oil that emphasizes the dial. Diameter 41,50 mm.

BACK

innovative locking system (Locking Ring System) with quick battery replacement. Laser-engraved serial number and QR code. Scanning the QR code grants access to an exclusive digital experience.

DIAL

curved blue metal with brushed soleil finishing. Hands, numbers and indexes treated with luminova in beige colour.

CRYSTAL

high quality curved sapphire.

WATER RESISTANCE

50 mt, 5 ATM.

STRAP

ultra-resistant vulcanised rubber, in black colour, personalised with the logo of the Maison in relief. Strap equipped with a new system for easy detachment from the watch lugs, no longer secured with screws. Steel tongue buckle.

Width: 20/18 mm.

STRAP: ref. 3991/Z - BUCKLE: ref. 7019/SS

Take care of your watch. Working between 0°/+60° when not worn.

PRICE:

DARKMOON

40MM BR BLACK CURVED VINTAGE

REF. 9547



Vintage revolution! 40 mm size with a new curved dial, with electromechanical movement completely immersed in an oil bath and a "vintage look" achieved with PVD bronze-treated steel case

MOVEMENT

the Swiss precision of the Ronda 762 quartz movement, lubricated in oil bath.

FUNCTIONS

hours, minutes, screw-down crown.

CASE

AlSI 316L stainless steel with an aged PVD bronze treatment, completely filled with a special oil that enhances the dial. Visible air bubble on the dial to compensate for temperature variations. Distinctive left-side crown guard. Diameter 40 mm.

BACK

innovative locking system (Locking Ring System) with quick battery replacement. Laser-engraved QR code for an exclusive digital experience.

DIAL

curved metal dial painted in bronze with a soleil finish. Numbers and indexes treated with black superluminova. Hands made of painted metal with bronze-coloured superluminova.

CRYSTAL

high-quality curved sapphire crystal.

WATER RESISTANCE

50 mt, 5 ATM.

STRAP

ultra-resistant vulcanised rubber, in black color. Tongue buckle in stainless steel with an aged PVD bronze treatment.

Width: 20/18 mm.

STRAP: ref. 8800/Z - BUCKLE: ref. 9680

Take care of your watch. Working between 0°/+60° when not worn.

PRICE:

DARKMOON

40MM BK BROWN CURVED VINTAGE

REF. 9549



Vintage revolution! 40 mm size with a new curved dial, with electromechanical movement completely immersed in an oil bath and a "vintage look" achieved with PVD bronze-treated steel case

MOVEMENT

the Swiss precision of the Ronda 762 quartz movement, lubricated in oil bath.

FUNCTIONS

hours, minutes, screw-down crown.

CASE

AlSI 316L stainless steel with an aged bronze PVD treatment, completely filled with a special oil that enhances the dial. Visible air bubble on the dial to compensate for temperature variations. Distinctive left-side crown guard. Diameter 40 mm.

BACK

innovative locking system (Locking Ring System) with quick battery replacement. Laser-engraved QR code for an exclusive digital experience.

DIAL

curved black-painted metal. Numbers and indexes treated with bronze-colored superluminova. Hands made of painted metal with bronze-colored superluminova.

CRYSTAL

high-quality curved sapphire crystal.

WATER RESISTANCE

50 mt, 5 ATM.

STRAP

ultra-resistant vulcanised rubber, in black color. Tongue buckle in steel with aged bronze PVD treatment.

Width: 20/18 mm.

STRAP: ref. 8800/Z - BUCKLE: ref. 9680

Take care of your watch. Working between 0°/+60° when not worn.

PRICE:

DARKMOON

40MM BK GREY CURVED CAMOUFLAGE

REF. 9551



Fall in love with camouflage! Innovative "Oil Immersion" concept in a 40 mm format with a new curved dial. Camouflage pattern with a special paint on the steel case treated with black PVD, harmonizing with a grey dial.

MOVEMENT

the Swiss precision of the Ronda 762 quartz movement, lubricated in oil bath.

FUNCTIONS

hours, minutes, screw-down crown.

CASE

AlSI 316L steel with camouflage treatment, completely filled with a special oil that emphasizes the dial. Visible air bubble on the dial to compensate for temperature variations. Protective crown guard on the left. Diameter 40 mm.

BACK

innovative locking system (Locking Ring System) with quick battery replacement. Laser-engraved QR code for an exclusive digital experience.

DIAL

curved metal dial painted in gray with a soleil finish. Numbers and indexes treated with black superluminova. Hands made of painted metal with gray superluminova.

CRYSTAL

high-quality curved sapphire crystal.

WATER RESISTANCE

50 mt, 5 ATM.

STRAP

ultra-resistant vulcanised rubber, in black color. Tongue buckle steel with camouflage treatment.

Width: 20/18 mm.

STRAP: ref. 8800/Z - BUCKLE: ref. 9682

Take care of your watch. Working between 0°/+60° when not worn.

PRICE:

DARKMOON

40MM BK GREY CURVED CAMOUFLAGE

REF. 9552



Discover your mimetic side! Innovative "Oil Immersion" concept in a 40 mm size with a new camouflage pattern thanks to a special paint on the black PVD-treated steel case.

MOVEMENT

the Swiss precision of the Ronda 762 quartz movement, lubricated in oil bath.

FUNCTIONS

hours, minutes, screw-down crown.

CASE

AlSI 316L steel with camouflage treatment, completely filled with a special oil that emphasizes the dial. Visible air bubble on the dial to compensate for temperature variations. Protective crown guard on the left. Diameter 40 mm.

BACK

innovative locking system (Locking Ring System) with quick battery replacement. Laser-engraved QR code for an exclusive digital experience.

DIAL

curved black metal dial. Numbers and indexes treated with gray superluminova. Hands treated with gray superluminova.

CRYSTAL

high-quality curved sapphire crystal.

WATER RESISTANCE

50 mt, 5 ATM.

STRAP

ultra-resistant vulcanised rubber, in black color. Tongue buckle steel with camouflage treatment.

Width: 20/18 mm.

STRAP: ref. 8800/Z - BUCKLE: ref. 9682

Take care of your watch. Working between 0°/+60° when not worn.

PRICE:

DARKMOON

40MM BK BLACK CURVED PVD

REF. 9545



The allure of total black! Darkmoon, 40 mm in size, features “Oil Immersion” on a black dial and a black PVD-treated steel case.

MOVEMENT

the Swiss precision of the Ronda 762 quartz movement, lubricated in oil bath.

FUNCTIONS

hours, minutes, screw-down crown.

CASE

AISI 316L stainless steel with PVD treatment, completely filled with a special oil that emphasizes the dial. Visible air bubble on the dial to compensate for temperature variations. Protective crown guard on the left. Diameter 40 mm.

BACK

innovative locking system (Locking Ring System) with quick battery replacement. Laser-engraved QR code for an exclusive digital experience.

DIAL

curved black-painted metal dial. Numbers and indexes treated with gray superluminova. Hands painted with gray superluminova.

CRYSTAL

high-quality curved sapphire crystal.

WATER RESISTANCE

50 mt, 5 ATM.

STRAP

ultra-resistant vulcanised rubber, in black color. Tongue buckle in steel with subsequent PVD treatment.

Width: 20/18 mm.

STRAP: ref. 8800/Z - BUCKLE: ref. 7018/MATT

Take care of your watch. Working between 0°/+60° when not worn.

PRICE:

DARKMOON

44,80MM BK BLACK CURVED PVD

REF. 9544



Blacker than black! Let yourself be captivated by the “Oil Immersion” concept in a 44,80 mm size with an absolute black curved dial on the black PVD-treated steel case.

MOVEMENT

the Swiss precision of the Ronda 712.3 quartz movement, lubricated in oil bath.

FUNCTIONS

hours, minutes, screw-down crown.

CASE

AISI 316L stainless steel with PVD treatment, completely filled with a special oil that emphasizes the dial. Visible air bubble on the dial to compensate for temperature variations. Protective crown guard on the left. Diameter 44,80 mm.

BACK

innovative locking system (Locking Ring System) with quick battery replacement. Laser-engraved QR code for an exclusive digital experience.

DIAL

curved black painted metal dial. Numbers and indexes treated with gray superluminova. Hands painted with superluminova in gray color.

CRYSTAL

high-quality curved sapphire crystal.

WATER RESISTANCE

50 mt, 5 ATM.

STRAP

ultra-resistant vulcanised rubber, in black color. Tongue buckle in steel with PVD treatment.

Width: 22/20 mm.

STRAP: ref. 8351/Z - BUCKLE: ref. 5467/MATT/SCREW.

Take care of your watch. Working between 0°/+60° when not worn.

PRICE:

DARKMOON

44,80MM UNICO

REF. 9600/A NUMBERED EDITION



Unique by Name, Unique by DNA! The numbered edition Darkmoon watch, "Unico", skillfully blends modernity with past styles. Highly individual creation and pride of craftsmanship and 'hand-made' work, each Unico possesses its own identity thanks to treatment with carefully selected oxidizing acids.

MOVEMENT

the Swiss precision of the Ronda 712.3 quartz movement, lubricated in oil bath.

FUNCTIONS

hours, minutes, screw-down crown.

CASE

made of AISI 316L steel with aged bronze PVD treatment, with a special manual treatment using various overlapping acids to create an oxidized and antiqued effect. The case is filled with a special oil that highlights the dial, creating the illusion of the absence of glass, with a more intense color effect and enhanced readability. Visible air bubble on the dial to compensate for temperature variations. Distinctive crown protector on the left. Diameter 44,80 mm.

BACK

innovative locking system (Locking Ring System) with quick battery replacement. Laser-engraved serial number and QR code. Scanning the QR code grants access to an exclusive digital experience.

DIAL

domed, made of painted metal with an aged finish. Black colored indexes and numbers. Painted metal hands with black superluminova.

CRYSTAL

high-quality curved sapphire crystal.

WATER RESISTANCE

50 mt, 5 ATM.

STRAP

laser-cut aged leather with natural process, cognac color. Handmade in Tuscany by expert craftsmen, with careful selection of leathers and materials and entirely Italian processing. Waxed cotton stitching. AISI 316L steel buckle with aged bronze PVD treatment.

Width: 22/20 mm.

STRAP: ref. 9384/Z. - BUCKLE: ref. 9598.

Take care of your watch. Working between 0°/+60° when not worn.

PRICE:

DARKMOON

44,80MM BK GREY CURVED CAMOUFLAGE

REF. 9553



Camouflage effect! Innovative "Oil Immersion" concept in a 44,80 mm format with a new curved dial and a camouflage pattern using a special paint on the black PVD-treated steel case.

MOVEMENT

the Swiss precision of the Ronda 712.3 quartz movement, lubricated in oil bath.

FUNCTIONS

hours, minutes, screw-down crown.

CASE

AISI 316L steel with camouflage treatment, completely filled with a special oil that emphasizes the dial. Visible air bubble on the dial to compensate for temperature variations. Protective crown guard on the left. Diameter 44,80 mm.

BACK

innovative locking system (Locking Ring System) with quick battery replacement. Laser-engraved QR code for an exclusive digital experience.

DIAL

curved black metal dial. Numbers and indexes treated with gray superluminova. Hands treated with gray superluminova

CRYSTAL

high-quality curved sapphire crystal.

WATER RESISTANCE

50 mt, 5 ATM.

STRAP

ultra-resistant vulcanised rubber, in black color. Tongue buckle in steel with camouflage treatment.

Width: 22/20 mm.

STRAP: ref. 8351/Z - BUCKLE: ref. 9683

Take care of your watch. Working between 0°/+60° when not worn.

PRICE:

DARKMOON

46,50MM BLACK PVD

REF. 8464/E



The PVD stainless steel case is completely filled with a special oil that emphasizes the dial, creating an optical effect of a more intense black and higher legibility. Innovative locking system (Locking Ring System) with quick battery replacement.

MOVEMENT

the Swiss precision of the Ronda 762 quartz movement, lubricated through an oil bath

FUNCTIONS

hours, minutes, screw-down crown.

CASE

AlSi 316L stainless steel with subsequent PVD treatment, completely filled with a special oil that emphasizes the dial. Diameter 46,50 mm.

BACK

innovative locking system (Locking Ring System) with quick battery replacement. Laser-engraved serial number and QR code. Scanning the QR code grants access to an exclusive digital experience.

DIAL

black painted metal. Hands, numbers and indexes treated with superluminova in beige colour.

CRYSTAL

domed sapphire.

WATER RESISTANCE

50 mt, 5 ATM.

STRAP

ultra-resistant vulcanised rubber, in black colour, personalised with the logo of the Maison in relief. Strap equipped with a new system for easy detachment from the watch lugs, no longer secured with screws. Tongue buckle in steel with subsequent PVD treatment.

Width: 22/20 mm.

STRAP: ref. 3990/Z - BUCKLE: ref. 5466/SCREW

Take care of your watch. Working between 0°/+60° when not worn.

PRICE:

DARKMOON

46,50MM BLACK SS

REF. 8463/D



The stainless steel case is completely filled with a special oil that emphasizes the dial, creating an optical effect of a more intense black and higher legibility. Innovative locking system (Locking Ring System) with quick battery replacement.

MOVEMENT

the Swiss precision of the Ronda 762 quartz movement, lubricated through an oil bath.

FUNCTIONS

hours, minutes, screw-down crown.

CASE

AlSi 316L stainless steel, completely filled with a special oil that emphasizes the dial. Diameter 46,50 mm.

BACK

innovative locking system (Locking Ring System) with quick battery replacement. Engraved serial number.

DIAL

black painted metal. Hands, numbers and indexes treated with superluminova in beige colour.

CRYSTAL

domed sapphire.

WATER RESISTANCE

50 mt, 5 ATM.

STRAP

ultra-resistant vulcanised rubber, in black colour, personalised with the logo of the Maison in relief. Strap equipped with a new system for easy detachment from the watch lugs, no longer secured with screws. Steel tongue buckle.

Width: 22/20 mm.

STRAP: ref. 3990/Z - BUCKLE: ref. 5466/SCREW

Take care of your watch. Working between 0°/+60° when not worn.

PRICE:

DARKMOON

46,50MM RED GLASS PVD

REF. 8466/D



The PVD stainless steel case is completely filled with a special oil that emphasizes the dial, creating an optical effect of higher legibility. Innovative locking system (Locking Ring System) with quick battery replacement.

MOVEMENT

the Swiss precision of the Ronda 762 quartz movement, lubricated through an oil bath.

FUNCTIONS

hours, minutes, screw-down crown.

CASE

AISI 316L stainless steel with subsequent PVD treatment, completely filled with a special oil that emphasizes the dial. Diameter 46,50 mm.

BACK

innovative locking system (Locking Ring System) with quick battery replacement. Engraved serial number.

DIAL

curved black-painted metal dial. Indexes and numbers treated with gray superluminova. Hands painted with gray superluminova.

CRYSTAL

domed sapphire with special red colour treatment.

WATER RESISTANCE

50 mt, 5 ATM.

STRAP

ultra-resistant vulcanised rubber, in black colour, personalised with the logo of the Maison in relief. Strap equipped with a new system for easy detachment from the watch lugs, no longer secured with screws. PVD Steel tongue buckle.

Width: 22/20 mm.

STRAP: ref. 3990/Z - BUCKLE: ref. 5467/MATT/SCREW

Take care of your watch. Working between 0°/+60° when not worn.

PRICE:

DARKMOON

44,80MM RED GLASS SS

REF. 8465/B



The stainless steel case is completely filled with a special oil that emphasizes the dial, creating an optical effect of higher legibility. Innovative locking system (Locking Ring System) with quick battery replacement.

MOVEMENT

the Swiss precision of the Ronda 712.3 quartz movement, lubricated through an oil bath.

FUNCTIONS

hours, minutes, screw-down crown.

CASE

AISI 316L stainless steel, completely filled with a special oil that emphasizes the dial. Diameter 44,80 mm.

BACK

innovative locking system (Locking Ring System) with quick battery replacement.

DIAL

black painted metal. Hands, numbers and indexes in white colour.

CRYSTAL

domed sapphire with special red colour treatment.

WATER RESISTANCE

50 mt, 5 ATM.

STRAP

ultra-resistant vulcanised rubber, in black colour. Steel tongue buckle.

Width: 22/20 mm.

STRAP: ref. 8351/Z - BUCKLE: ref. 5466/SCREW

Take care of your watch. Working between 0°/+60° when not worn.

PRICE:

DARKMOON

46,50MM GREEN PVD SOLEIL

REF. 8698/E



The PVD stainless steel case is completely filled with a special oil that emphasizes the dial, made in green metal with soleil finishing, creating an optical effect of a more intense colour and higher legibility. Innovative locking system (Locking Ring System) with quick battery replacement.

MOVEMENT

the Swiss precision of the Ronda 762 quartz movement, lubricated through an oil bath.

FUNCTIONS

hours, minutes, screw-down crown.

CASE

AISI 316L stainless steel with subsequent PVD treatment, completely filled with a special oil that emphasizes the dial. Diameter 46,50 mm.

BACK

innovative locking system (Locking Ring System) with quick battery replacement. Laser-engraved serial number and QR code. Scanning the QR code grants access to an exclusive digital experience.

DIAL

domed, green metal with brushed soleil finishing. Hands, numbers and indexes treated with superluminova in beige colour.

CRYSTAL

domed sapphire.

WATER RESISTANCE

50 mt, 5 ATM.

STRAP

ultra-resistant vulcanised rubber, in black colour, personalised with the logo of the Maison in relief. Strap equipped with a new system for easy detachment from the watch lugs, no longer secured with screws. PVD Steel tongue buckle.

Width: 22/20 mm.

STRAP: ref. 3990/Z - BUCKLE: ref. 5467/MATT/SCREW

Take care of your watch. Working between 0°/+60° when not worn.

PRICE:

DARKMOON

46,50MM GREEN SS SOLEIL

REF. 8702/E



The stainless steel case is completely filled with a special oil that emphasizes the dial, made in green metal with soleil finishing, creating an optical effect of a more intense colour and higher legibility. Innovative locking system (Locking Ring System) with quick battery replacement.

MOVEMENT

the Swiss precision of the Ronda 762 quartz movement, lubricated through an oil bath.

FUNCTIONS

hours, minutes, screw-down crown.

CASE

AISI 316L stainless steel., completely filled with a special oil that emphasizes the dial. Diameter 46,50 mm.

BACK

innovative locking system (Locking Ring System) with quick battery replacement. Laser-engraved serial number and QR code. Scanning the QR code grants access to an exclusive digital experience.

DIAL

domed, green metal with brushed soleil finishing. Hands, numbers and indexes treated with superluminova in beige colour.

CRYSTAL

domed sapphire.

WATER RESISTANCE

50 mt, 5 ATM.

STRAP

ultra-resistant vulcanised rubber, in black colour, personalised with the logo of the Maison in relief. Strap equipped with a new system for easy detachment from the watch lugs, no longer secured with screws. Steel tongue buckle.

Width: 22/20 mm.

STRAP: ref. 3990/Z - BUCKLE: ref. 5466/SCREW

Take care of your watch. Working between 0°/+60° when not worn.

PRICE:

DARKMOON

46,50MM BLUE PVD SOLEIL

REF. 8700/E



The PVD stainless steel case is completely filled with a special oil that emphasizes the dial, made in blue metal with soleil finishing, creating an optical effect of a more intense colour and higher legibility. Innovative locking system (Locking Ring System) with quick battery replacement.

MOVEMENT

the Swiss precision of the Ronda 762 quartz movement, lubricated through an oil bath.

FUNCTIONS

hours, minutes, screw-down crown.

CASE

AISI 316L stainless steel with subsequent PVD treatment, completely filled with a special oil that emphasizes the dial. Diameter 46,50 mm.

BACK

Innovative locking system (Locking Ring System) with quick battery replacement. Laser-engraved serial number and QR code. Scanning the QR code grants access to an exclusive digital experience.

DIAL

domed, blue metal with brushed soleil finishing. Hands, numbers and indexes treated with superluminova in beige colour.

CRYSTAL

domed sapphire.

WATER RESISTANCE

50 mt, 5 ATM.

STRAP

ultra-resistant vulcanised rubber, in black colour, personalised with the logo of the Maison in relief. Strap equipped with a new system for easy detachment from the watch lugs, no longer secured with screws. PVD Steel tongue buckle.

Width: 22/20 mm.

STRAP: ref. 3990/Z - BUCKLE: ref. 5467/MATT/SCREW

Take care of your watch. Working between 0°/+60° when not worn.

PRICE:

DARKMOON

46,50MM BLUE SS SOLEIL

REF. 8704/E



The stainless steel case is completely filled with a special oil that emphasizes the dial, made in blue metal with soleil finishing, creating an optical effect of a more intense colour and higher legibility. Innovative locking system (Locking Ring System) with quick battery replacement.

MOVEMENT

the Swiss precision of the Ronda 762 quartz movement, lubricated through an oil bath.

FUNCTIONS

hours, minutes, screw-down crown.

CASE

AISI 316L stainless steel, completely filled with a special oil that emphasizes the dial. Diameter 46,50 mm.

BACK

innovative locking system (Locking Ring System) with quick battery replacement. Laser-engraved serial number and QR code. Scanning the QR code grants access to an exclusive digital experience.

DIAL

domed, blue metal with brushed soleil finishing. Hands, numbers and indexes treated with superluminova in beige colour.

CRYSTAL

domed sapphire.

WATER RESISTANCE

50 mt, 5 ATM.

STRAP

ultra-resistant vulcanised rubber, in black colour, personalised with the logo of the Maison in relief. Strap equipped with a new system for easy detachment from the watch lugs, no longer secured with screws. Steel tongue buckle.

Width: 22/20 mm.

STRAP: ref. 3990/Z - BUCKLE: ref. 5466/SCREW

Take care of your watch. Working between 0°/+60° when not worn.

PRICE:

DARKMOON

44,80MM RED PVD SOLEIL

REF. 8697/B



The PVD stainless steel case is completely filled with a special oil that emphasizes the dial, made in red metal with soleil finishing, creating an optical effect of a more intense colour and higher legibility. Innovative locking system (Locking Ring System) with quick battery replacement.

MOVEMENT

the Swiss precision of the Ronda 712.3 quartz movement, lubricated through an oil bath.

FUNCTIONS

hours, minutes, screw-down crown.

CASE

AISI 316L stainless steel with subsequent PVD treatment, completely filled with a special oil that emphasizes the dial. Diameter 44,80 mm.

BACK

innovative locking system (Locking Ring System) with quick battery replacement.

DIAL

red metal with brushed soleil finishing. Hands, numbers and indexes treated with superluminova in beige colour.

CRYSTAL

domed sapphire.

WATER RESISTANCE

50 mt, 5 ATM.

STRAP

ultra-resistant vulcanised rubber, in black colour. PVD Steel tongue buckle.

Width: 22/20 mm.

STRAP: ref. 8351/Z - BUCKLE: ref. 5467/MATT/SCREW

Take care of your watch. Working between 0°/+60° when not worn.

PRICE:

DARKMOON

46,50MM BK CURVE AQUAMARINE PVD

REF. 9526/B



Electromechanical movement completely immersed in an oil bath. Black PVD-treated steel case, black dial, and numerals, indexes and hands treated in tourquise superluminova. "Oil Immersion" concept in 46,50 mm size.

MOVEMENT

the Swiss precision of the Ronda 762 quartz movement, lubricated through an oil bath.

FUNCTIONS

hours, minutes, screw-down crown.

CASE

AISI 316L stainless steel, with subsequent PVD treatment, completely filled with a special oil that emphasizes the dial. Diameter 46,50 mm.

BACK

innovative locking system (Locking Ring System) with quick battery replacement. Laser-engraved serial number and QR code. Scanning the QR code grants access to an exclusive digital experience.

DIAL

black painted metal. Hands, numbers and indexes treated with acquamarine luminova.

CRYSTAL

high quality curved sapphire.

WATER RESISTANCE

50 mt, 5 ATM.

STRAP

ultra-resistant silicone, in acquamarine color, personalised with the logo of the Maison in relief. Strap equipped with a new system for easy detachment from the watch lugs, no longer secured with screws. Steel tongue buckle with subsequent PVD treatment.

Width: 22/20 mm.

STRAP: ref. 3957/Z - BUCKLE: ref. 5467/SCREW

Take care of your watch. Working between 0°/+60° when not worn.

PRICE:



DIVE WATCH

The dive line is designed to withstand the rigorous demands of professional diving and offers a technical and bold design along with a high resistance up to 1001 meters.

DIVE WATCH

SOMMERSO 46MM DAMASCO LEFT

REF. 9999



The diver Sommerso model challenges the depths with an elegant Damascus steel case. Its fascinating aesthetic effect covers it entirely, not neglecting the rotating bezel and the case back.

MOVEMENT

Swiss automatic mechanical Sellita SW 200, elaborated and modified according to U-BOAT specifications. Frequency 28,800 alternations/hour (4 Hz). Power reserve of 41 hours. 26 jewels. Custom skeletonized rotor.

FUNCTIONS

hours, minutes, seconds, date, 24 h indicator, unidirectional rotating bezel with reference marks. Screw-down crown and crown protector.

CASE

made of damascus steel, distinctive patented crown protector position on the left. Plate fixed on the side of the case with serial number engraving. Diameter 46 mm.

BACK

made of damascus steel. Closed with 6 screws.

DIAL

three-level black dial. Brushed metal numerals treated with beige superluminova, raised indexes treated with beige superluminova. Painted metal hands treated with beige superluminova. 24 h sphere and minute hand reference in blue superluminova. Visible ruby.

CRYSTAL

high quality sapphire crystal with anti-reflective treatment.

WATER RESISTANCE

300 mt, 30 ATM.

STRAP

ultra-resistant vulcanized rubber strap, black color, customized with embossed Maison logo. Damascus steel tongue buckle.

Width: 22/20 mm.

STRAP: ref. 8351/Z - BUCKLE: ref. 9977

PREZZO: \$

DIVE WATCH

SOMMERSO 46MM DAMASCO RIGHT EDITION

REF. 9988

99 PCS LIMITED EDITION



For the first time, U-BOAT presents its ultimate Diver, the Sommerso watch, with a case entirely made of Damascus steel, celebrating left-handers with a limited edition of only 99 pieces.

MOVEMENT

Swiss automatic mechanical Sellita SW 200, elaborated and modified according to U-BOAT specifications. Frequency 28,800 alternations/hour (4 Hz). Power reserve of 41 hours. 26 jewels. Custom skeletonized rotor.

FUNCTIONS

hours, minutes, seconds, date, 24 h indicator, unidirectional rotating bezel with reference marks. Screw-down crown and crown protector.

CASE

made of damascus steel, crown protector position on the right. Plate fixed on the side of the case with serial number engraving. Diameter 46 mm.

BACK

made of damascus steel. Closed with 6 screws.

DIAL

three-level black dial. Brushed metal numerals treated with beige superluminova, raised indexes treated with beige superluminova. Painted metal hands treated with beige superluminova. 24 h sphere and minute hand reference in blue superluminova. Visible ruby.

CRYSTAL

high quality sapphire crystal with anti-reflective treatment.

WATER RESISTANCE

300 mt, 30 ATM.

STRAP

ultra-resistant vulcanized rubber strap, black color, customized with embossed Maison logo. Damascus steel tongue buckle.

Width: 22/20 mm

STRAP: ref. 8351/Z - BUCKLE: ref. 9977

PREZZO: \$

DIVE WATCH

SOMMERSO 46MM DLC

REF. 9015



Designed for diving lovers with a classy style, the SOMMERSO DLC features a rotating bezel and is 300 meters waterproof.

MOVEMENT
automatic mechanical.

FUNCTIONS
date, hours, minutes, seconds, 24 h indicator. Graduated unidirectional bezel, screw down crown.

CASE
stainless steel AISI 316L, with subsequent treatment DLC black, distinguishing crown on the left side, with a patented protective device. Serial number plate fixed on the left side of the case. Diameter 46 mm.

BACK
sealed with seven external screws.

DIAL
three superimposed dials, black with visible ruby. Hands, numbers and indexes treated with superluminova in beige colour. Blue 24 h indicator hand. Steel brushed frame around the numbers.

CRYSTAL
high quality sapphire crystal with anti-reflective treatment, lent on the date window.

WATER RESISTANCE
300 mt, 30 ATM.

STRAP
ultra-resistant vulcanised rubber, in black colour. Tongue buckle in steel with DLC coating.
Width: 22/20 mm.
STRAP: ref. 8351/Z - BUCKLE: ref. 5467/SCREW

PRICE:

DIVE WATCH

SOMMERSO 46MM DLC BRACELET

REF. 9015/MT



Total Black Diving. The Sommerso DLC features a rotating bezel and water resistance up to 300 meters. The case and the bracelet are made of steel with a special ultra-resistant DLC (Diamond-like Carbon) coating.

MOVEMENT
automatic mechanical.

FUNCTIONS
date, hours, minutes, seconds, 24 h indicator. Graduated unidirectional bezel, screw down crown.

CASE
stainless steel AISI 316L, with subsequent treatment DLC black, distinguishing crown on the left side, with a patented protective device. Serial number plate fixed on the left side of the case. Diameter 46 mm.

BACK
sealed with seven external screws.

DIAL
three superimposed dials, black with visible ruby. Hands, numbers and indexes treated with superluminova in beige colour. Blue 24 h indicator hand. Steel brushed frame around the numbers.

CRYSTAL
high quality sapphire crystal with anti-reflective treatment, lent on the date window.

WATER RESISTANCE
300 mt, 30 ATM.

STRAP
bracelet in stainless steel AISI 316L, with DLC treatment. Deployant clasp.
Width: 22 mm.
STRAP: ref. 8349/BK

PRICE:

DIVE WATCH

SOMMERSO CERAMIC 46MM

REF. 9519-9520-9521



REF. 9519

REF. 9520

REF. 9521

MOVEMENT

automatic mechanical.

FUNCTIONS

date, hours, minutes, seconds, 24 h indicator. Graduated unidirectional bezel with white superluminova references on a two-tone ceramic insert for models 9519 and 9520, black ceramic for model 9521. Screw down crown.

CASE

stainless steel AISI 316L. Distinguishing crown on the left side, with a patented protective device. Serial number plate fixed on the left side of the case. Diameter 46 mm.

BACK

sealed with seven external screws.

DIAL

three superimposed dials, two-tone bordeaux and black ref. 9521, green and black ref. 9520 and blue and black ref. 9519. Visible ruby. Numbers with glasses in brushed metal. Numbers and indexes treated in white superluminova. Hands in painted metal with white superluminova treatment. 24 h indicator's hand in red. Red reference on minutes hands.

CRYSTAL

high quality sapphire crystal with anti-reflective treatment, lent on the date window.

WATER RESISTANCE

300 mt, 30 ATM.

STRAP

ultra-resistant vulcanised rubber, in black colour. Tongue buckle in steel.

Width: 22/20 mm.

STRAP: ref. 8351/Z - BUCKLE: ref. 5466/SCREW

PRICE:

DIVE WATCH

SOMMERSO CERAMIC MT 46MM

REF. 9519/MT-9520/MT-9521/MT



REF. 9519/MT

REF. 9520/MT

REF. 9521/MT

MOVEMENT

automatic mechanical.

FUNCTIONS

date, hours, minutes, seconds, 24 h indicator. Graduated unidirectional bezel with white superluminova references on a two-tone ceramic insert for models 9519/MT and 9520/MT, black ceramic for model 9521/MT. Screw down crown.

CASE

stainless steel AISI 316L. Distinguishing crown on the left side, with a patented protective device. Serial number plate fixed on the left side of the case. Diameter 46 mm.

BACK

sealed with seven external screws.

DIAL

three superimposed dials, two-tone bordeaux and black ref. 9521/MT, green and black ref. 9520/MT and blue and black ref. 9519/MT. Visible ruby. Numbers with glasses in brushed metal. Numbers and indexes treated in white superluminova. Hands in painted metal with white superluminova treatment. 24 h indicator's hand in red. Red reference on minutes hands.

CRYSTAL

high quality sapphire crystal with anti-reflective treatment, lent on the date window.

WATER RESISTANCE

300 mt, 30 ATM.

STRAP

bracelet in stainless steel AISI 316L. Deployant clasp.

Width: 22 mm.

STRAP: ref. 8349

PRICE:

DIVE WATCH

SOMMERSO/A 46MM

REF. 9007/A



Classico SOMMERSO is the DIVE WATCH designed by Italo Fontana characterized by a bold and functional design. It features a rotating bezel and an additional 24 hour counter. The watch has a water resistance of up to 300 meters and a vulcanized rubber strap with water-repellent calfskin lining in black colour.

MOVEMENT
automatic mechanical.

FUNCTIONS
date, hours, minutes, seconds, 24 h indicator, graduated unidirectional bezel, screw down crown.

CASE
stainless steel AISI 316L, satin hand finish, distinguishing crown on the left side, with a patented protective device. Serial number plate fixed on the left side of the case. Diameter 46 mm.

BACK
sealed with seven external screws.

DIAL
three superimposed dials, black with visible ruby. Hands, numbers and indexes treated with superluminova in beige colour.

CRYSTAL
sapphire crystal with anti-reflective coating, lent on the date window.

WATER RESISTANCE
300 mt, 30 ATM.

STRAP
ultra-resistant vulcanised rubber, in black colour. Stainless steel tongue buckle.
Width: 22/20 mm.
STRAP: ref. 8351/Z - BUCKLE: ref. 5466/SCREW

PRICE:

DIVE WATCH

SOMMERSO/A BRACELET 46MM

REF. 9007/A/MT



Classico SOMMERSO is the DIVE WATCH designed by Italo Fontana characterized by a bold and functional design. It features a rotating bezel and an additional 24 hour counter. The watch has a water resistance of up to 300 meters.

MOVEMENT
automatic mechanical.

FUNCTIONS
date, hours, minutes, seconds, 24 h indicator, graduated unidirectional bezel, screw down crown.

CASE
stainless steel AISI 316L, satin hand finish, distinguishing crown on the left side, with a patented protective device. Serial number plate fixed on the left side of the case. Diameter 46 mm.

BACK
sealed with seven external screws.

DIAL
three superimposed dials, black with visible ruby. Hands, numbers and indexes treated with superluminova in beige colour.

CRYSTAL
sapphire crystal with anti-reflective coating, lent on the date window.

WATER RESISTANCE
300 mt, 30 ATM.

STRAP
bracelet in stainless steel AISI 316L. Deployant clasp.
Width: 22 mm.
STRAP: ref. 8349

PRICE:

DIVE WATCH

SOMMERSO 46MM BRONZO

REF. 8486

The unique shades of natural bronze joined with the technical specifications for professional diving are the main features of this DIVE WATCH with an exuberant design. Additional 24 hour counter.

MOVEMENT

automatic mechanical.

FUNCTIONS

date, hours, minutes, seconds, 24 h indicator. Graduated unidirectional bezel, lasered graduations and numerals, screw down crown.

CASE

bronze, naturally aged, distinguishing crown on the left side, with a patented protective device. Serial number plate fixed on the left side of the case. Diameter 46 mm.

BACK

screwed, in bronze with special antiqued anti-corrosion treatment.

DIAL

black with visible ruby. Hands, numbers and indexes treated with superluminova in beige colour.

CRYSTAL

sapphire crystal with anti-reflective coating.

WATER RESISTANCE

300 mt, 30 ATM.

STRAP

hand finished calf leather, dark brown. Tongue buckle in bronze.

Width: 22/20 mm.

STRAP: ref. 8554/Z - BUCKLE: ref. 8590/SCREW



PRICE:



CAPSULE

Steampunk-inspired aesthetics reminiscent of the imaginary underwater worlds described by Jules Verne. Inspired by the 1930s bathyspheres, capable of withstanding depths of up to 100 meters, featuring an iconic and futuristic design in a limited edition.



CAPSULE

45MM PVD BLACK BL

REF. 8808
200 PCS LIMITED EDITION



Inspired by the first undersea exploration modules of the 1930s, the CAPSULE watch boasts a thick and domed sapphire crystal that amplifies the view of the dark dial, creating a magnifying glass effect. The crystal is sealed to the 45 mm case through an external and independent bezel. A long see-through slit with a view of the dial runs all around the watch circumference.

MOVEMENT
automatic mechanical.

FUNCTIONS
hours, minutes, seconds, date, crown cover.

CASE
in AISI 316L stainless steel with subsequent PVD treatment, round sapphire glass side window. Patented crown protection on the left, lever with patented crown extraction system at 10 o'clock. 45 mm diameter.

BACK
laser engraving. Sealed with four external screws. Serial plate screwed in.

DIAL
three superimposed dials in black metal with visible opening on leverage. Indexes and numbers with indexes in brushed metal treated with blue superluminova. Hands in painted metal treated with blue superluminova.

CRYSTAL
domed sapphire crystal with anti-reflective treatment.

WATER RESISTANCE
100 mt, 10 ATM.

STRAP
laser cut strap, black color, handmade from hand-finished calf leather and processed according to traditional artisan techniques to give the strap a naturally distressed look and feel. Black finishes made with waxed cotton. Steel tongue buckle with subsequent PVD treatment.
Width: 20/20 mm.
STRAP: ref. 9690/Z - BUCKLE: ref. 9426

PRICE:

CAPSULE

45MM SS BK BEIGE

REF. 8809
200 PCS LIMITED EDITION



Directly inspired by depth gauges from the early 1930s, this limited edition CAPSULE watch, restricted to 200 pieces, features a 45 mm 316L steel case. It has a black dial with indexes and numbers treated in beige superluminova. The futuristic design, influenced by steampunk aesthetics, brings the imaginary worlds of Jules Verne directly to the wrist.

MOVEMENT
automatic mechanical.

FUNCTIONS
hours, minutes, seconds, date, crown cover.

CASE
in AISI 316L stainless steel, round sapphire side window. Patented crown protection on the left, lever with patented crown extraction system at 10 o'clock. 45 mm diameter.

BACK
laser engraving. Sealed with four external screws. Serial plate screwed in.

DIAL
three superimposed dials in black metal with visible opening on leverage. Indexes and numbers with indexes in brushed metal treated with beige superluminova. Hands in painted metal treated with beige superluminova.

CRYSTAL
domed sapphire crystal with anti-reflective treatment.

WATER RESISTANCE
100 mt, 10 ATM.

STRAP
laser cut strap, brown color, handmade from hand-finished calf leather and processed according to traditional artisan techniques to give the strap a naturally distressed look and feel. Finishes made with waxed cotton. Steel tongue buckle.
Width: 20/20 mm.
STRAP: ref. 9691/Z - BUCKLE: ref. 5466/MATT/SCREWS

PRICE:

CAPSULE

50MM PVD BLACK BL



REF. 8806
200 PCS LIMITED EDITION

A futuristic design with a strong steampunk influence brings the imaginary worlds of Jules Verne directly to the wrist. Inspired by the first undersea exploration modules of the 1930s, the CAPSULE features a 50 mm PVD-treated case.

MOVEMENT
automatic mechanical.

FUNCTIONS
hours, minutes, seconds, date, crown cover.

CASE
in AISI 316L stainless steel with subsequent PVD treatment, round sapphire side window. Patented crown protection on the left, lever with patented crown extraction system at 10 o'clock. 50 mm diameter.

BACK
laser engraving. Sealed with four external screws. Serial plate screwed in.

DIAL
three superimposed dials in black metal with visible opening on leverage. Indexes and numbers with indexes in brushed metal treated with blue superluminova. Hands in painted metal treated with blue superluminova.

CRYSTAL
domed sapphire crystal with anti-reflective treatment.

WATER RESISTANCE
100 mt, 10 ATM.

STRAP
laser cut strap, black color, handmade from hand-finished calf leather and processed according to traditional artisan techniques to give the strap a naturally distressed look and feel. Black finishes made with waxed cotton. Steel tongue buckle with subsequent PVD treatment.
Width: 23/22 mm.
STRAP: ref. 9385/Z - BUCKLE: ref. 9427

PRICE:

CAPSULE

50MM SS BK BEIGE



REF. 8807
200 PCS LIMITED EDITION

Directly inspired by depth gauges from the early 1930s, this limited edition CAPSULE watch, restricted to 200 pieces, features a 50 mm 316L steel case. It has a black dial with indexes and numbers treated in beige superluminova.

MOVEMENT
automatic mechanical.

FUNCTIONS
hours, minutes, seconds, date, crown cover.

CASE
in AISI 316L stainless steel, round sapphire side window. Patented crown protection on the left, lever with patented crown extraction system at 10 o'clock. 50 mm diameter.

BACK
laser engraving. Sealed with four external screws. Serial plate screwed in.

DIAL
three superimposed dials in black metal with visible opening on leverage. Indexes and numbers with indexes in brushed metal treated with beige superluminova. Hands in painted metal treated with beige superluminova.

CRYSTAL
domed sapphire crystal with anti-reflective treatment.

WATER RESISTANCE
100 mt, 10 ATM.

STRAP
laser cut strap, brown color, handmade from hand-finished calf leather and processed according to traditional artisan techniques to give the strap a naturally distressed look and feel. Finishes made with waxed cotton. Steel tongue buckle.
Width: 23/22 mm.
STRAP: ref. 9181/Z - BUCKLE: ref. 1763/MATT/SCREWS

PRICE:

CAPSULE

50MM T5 BK BE

REF. 8805
90 PCS LIMITED EDITION



Astonishing design, still drawing inspiration from 1930s bathyspheres, this limited edition CAPSULE watch is limited to only 90 pieces. It features a 50 mm grade 5 titanium case. The black dial showcases indexes and numbers treated with beige superluminova, along with a 24 hour indicator.

MOVEMENT
automatic mechanical.

FUNCTIONS
hours, minutes, seconds, 24 h indicator, date, crown cover.

CASE
titanium G5, round sapphire side window. Patented crown protection on the left, lever with patented crown extraction system at 10 o'clock. 50 mm diameter.

BACK
laser engraving. Sealed with four external screws. Serial plate screwed in.

DIAL
three superimposed dials in black metal with visible opening on leverage. Indexes and numbers with indexes in brushed metal treated with beige superluminova. Hands in painted metal treated with beige superluminova.

CRYSTAL
domed sapphire crystal with anti-reflective treatment.

WATER RESISTANCE
100 mt, 10 ATM.

STRAP
laser cut strap, brown color, handmade from hand-finished calf leather and processed according to traditional artisan techniques to give the strap a naturally distressed look and feel. Finishes made with waxed cotton. Titanium tongue buckle.
Width: 23/22 mm.
STRAP: ref. 9181/Z - BUCKLE: ref. 4881



PRICE:





LADY

LADY Collection, jewellery watches, embellished with diamonds patiently set one by one by Italian master artisans.



LADY CLASSICO 30MM

REF. 8898/8899/8900



REF. 8898

REF. 8899

REF. 8900

MOVEMENT

the Swiss precision of the Ronda 774 quartz movement.

FUNCTIONS

hours, minutes, date.

CASE

stainless steel AISI 316L, distinguishing crown on the left side, enriched at the end with sapphire. Diameter 30 mm.

BACK

mineral glass.

DIAL

in three levels, the lower one in polished metal, the upper one in aquamarine mother-of-pearl for ref. 8900, in black mother-of-pearl for ref. 8899, and in pink mother-of-pearl for ref. 8898, with 36 white diamonds set on indexes 12/4/8 (ct.0.08 tot.). Perforated indexes and hands in shiny steel.

CRYSTAL

high quality sapphire with anti-reflective treatment.

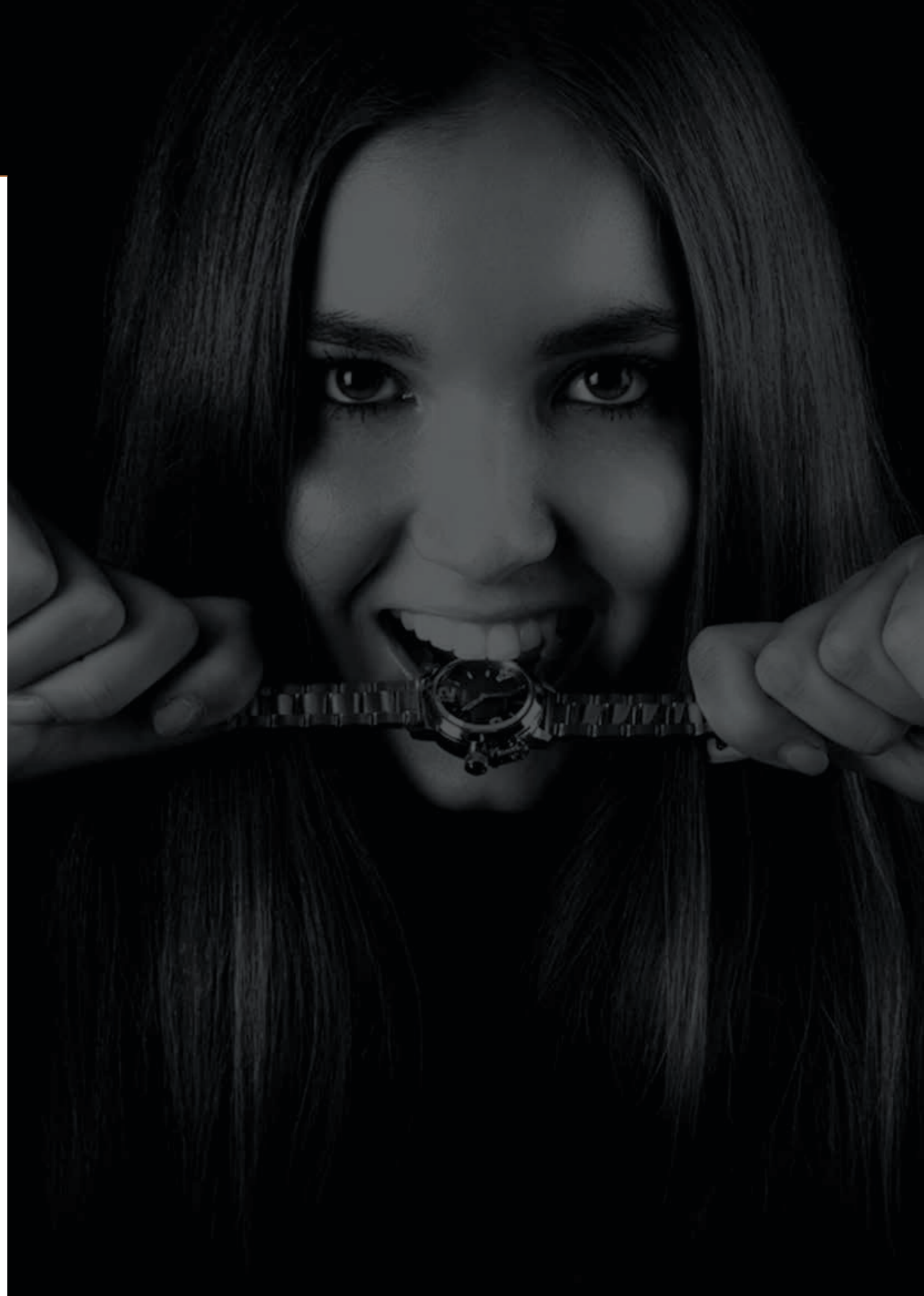
WATER RESISTANCE

50 mt, 5 ATM.

STRAP

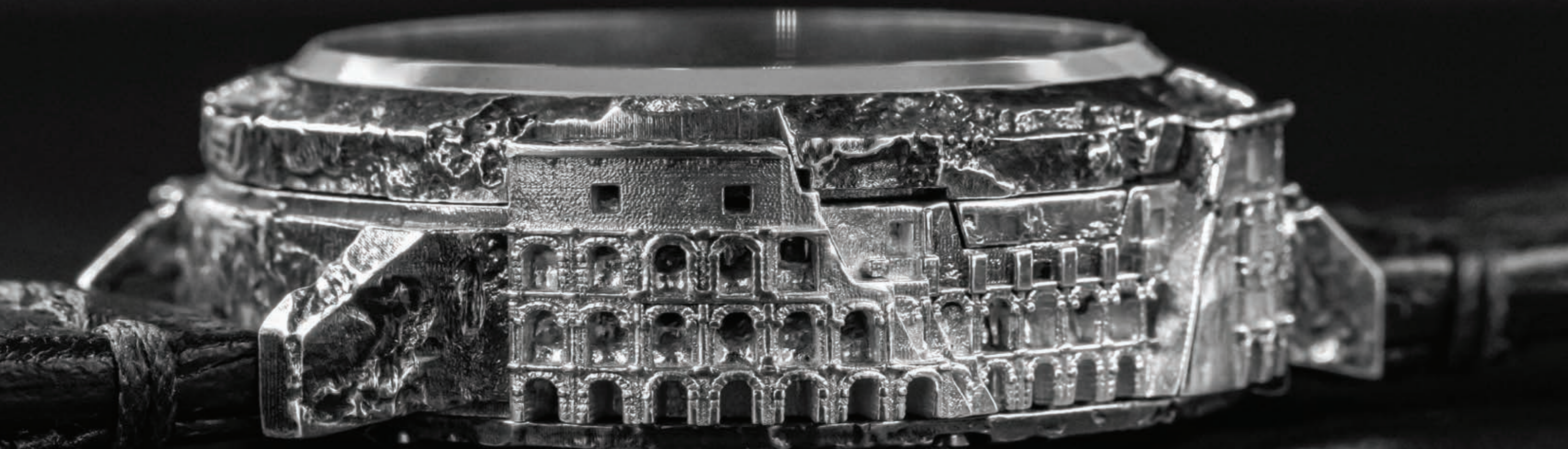
bracelet in stainless steel AISI 316L. Deployant clasp.
Width: 14 mm.

PRICE:



Special Editions

A rare example of fine watchmaking combined with fine Tuscan silver manufacturing. The watch becomes a work of art. A celebration of Italian culture and of the creative genius beyond all geographical limits.



SPECIAL

ROMA 45MM 925 DIAMOND

REF. RM925QR
SPECIAL EDITION

Wear the capital of Italy and the ancient world on your wrist. Rome, St. Peter's Basilica, the Colosseum faithfully engraved on the case of a special edition watch in silver. Instead of the crown, positioned on the left side of the case, a 1.30 to 2.00 carat black rose-cut diamond.

MOVEMENT
automatic mechanical. 26 rubies.

FUNCTIONS
hours, minutes, seconds.

CASE
in pure aged 925 silver, finely handcrafted, with lateral chisellings, the Colosseum on one side and the facade of St. Peter's Basilica on the other. Hand-chiseled silver bezel. 45 mm diameter. Weight of silver in the case: 121 gr.

CROWN
crown placed on the left side of the case and embellished with a black diamond, caliber between 1.30 and 2.00.

BACK
in 925 silver finished by hand, sealed with seven external screws, with Lupa capitolina, symbol of Rome, lasered. Laser-engraved QR code to provide access to an exclusive digital experience via smartphone.

DIAL
lasered, in pure 925 silver, with indexes and numbers in relief. Hands in painted and brushed metal.

CRYSTAL
sapphire with anti-reflective treatment.

STRAP
black strap in selected and hand-crafted alligator leather, with skate fish insert. Handmade 925 silver buckle. Silver buckle weight 8,50 gr.
Width: 20/20 mm.
STRAP: ref. 4791/Z - **BUCKLE:** ref. EU/BUCKLE925



PRICE:

SPECIAL

ROMA 45MM BRONZE DIAMOND

REF. RMBZQR
SPECIAL EDITION

Wear the capital of Italy and the ancient world on your wrist. Rome, St. Peter's Basilica, the Colosseum faithfully engraved on the case of a special edition watch in bronze. Instead of the crown, positioned on the left side of the case, a 1.30 to 2.00 carat black rose-cut diamond.

MOVEMENT
automatic mechanical. 26 rubies.

FUNCTIONS
hours, minutes, seconds.

CASE
in naturally aged bronze, finely handcrafted, with lateral chisellings, the Colosseum on one side and the facade of St. Peter's Basilica on the other. Hand-chiseled bronze bezel. 45 mm Diameter. Weight of the bronze in the case: 112 gr.

CROWN
crown placed on the left side of the case and embellished with a black diamond, caliber between 1.30 and 2.00.

BACK
in naturally aged bronze finished by hand, sealed with seven external screws, with the Lupa capitolina, symbol of Rome, lasered. Laser-engraved QR code to provide access to an exclusive digital experience via smartphone.

DIAL
lasered, in naturally aged bronze, with indexes and numbers in relief. Hands in painted and brushed metal.

CRYSTAL
sapphire with anti-reflective treatment.

STRAP
black strap in selected and hand-crafted alligator leather, with skate fish insert. Handmade naturally aged bronze buckle. Bronze buckle weight 7,50 gr.
Width: 20/20 mm.
STRAP: ref. 4791/Z - **BUCKLE:** ref. EU/BUCKLEBZ



PRICE:

SPECIAL FIRENZE 45MM 925 DIAMOND

REF. FI925QR SPECIAL EDITION



Wear the capital of the Renaissance on your wrist. A masterpiece of jewelry art in silver version, a special edition inspired by Florence and its historic monuments: Ponte Vecchio, the Cathedral of Santa Maria del Fiore. Instead of the crown, positioned on the left side of the case, a 1.30 to 2.00 carat black rose-cut diamond.

MOVEMENT
automatic mechanical. 26 rubies.

FUNCTIONS
hours, minutes, seconds.

CASE
in pure aged 925 silver, finely handcrafted, with lateral chisellings, Ponte Vecchio on one side and the Cathedral of Santa Maria del Fiore on the other. Hand-chiseled silver bezel. 45 mm diameter. Weight of silver in the case: 131 gr.

CROWN
crown placed on the left side of the case and embellished with a black diamond, caliber between 1.30 and 2.00.

BACK
in 925 silver finished by hand, sealed with seven external screws, with lasered Michelangelo's David. Laser-engraved QR code to provide access to an exclusive digital experience via smartphone.

DIAL
lasered, in pure 925 silver, with indexes and numbers in relief. Hands in painted and brushed metal.

CRYSTAL
sapphire with anti-reflective treatment.

STRAP
black strap in selected and hand-crafted alligator leather, with skate fish insert. Handmade 925 silver buckle. Silver buckle weight 8,50 gr.
Width: 20/20 mm.
STRAP: ref. 4791/Z - BUCKLE: ref. EU/BUCKLE925

PRICE:

SPECIAL FLORENCE 45MM BRONZE DIAMOND

REF. FIBZQR SPECIAL EDITION



Wear the capital of the Renaissance on your wrist. A masterpiece of jewelry art in bronze version, a special edition inspired by Florence and its historic monuments: Ponte Vecchio, the Cathedral of Santa Maria del Fiore. Instead of the crown, positioned on the left side of the case, a 1.30 to 2.00 carat black rose-cut diamond.

MOVEMENT
automatic mechanical. 26 rubies.

FUNCTIONS
hours, minutes, seconds.

CASE
in naturally aged bronze, finely handcrafted, with lateral chisellings, Ponte Vecchio on one side and the Cathedral of Santa Maria del Fiore on the other. Hand-chiseled bronze bezel. 45 mm diameter. Weight of the bronze in the case: 120 gr.

CROWN
crown placed on the left side of the case and embellished with a black diamond, caliber between 1.30 and 2.00.

BACK
in naturally aged bronze finished by hand, sealed with seven external screws, with lasered Michelangelo's David. Laser-engraved QR code to provide access to an exclusive digital experience via smartphone.

DIAL
lasered, in naturally aged bronze, with indexes and numbers in relief. Hands in painted and brushed metal.

CRYSTAL
sapphire with anti-reflective treatment.

STRAP
black strap in selected and hand-crafted alligator leather, with skate fish insert. Handmade naturally aged bronze buckle. Bronze buckle weight 7,50 gr.
Width: 20/20 mm.
STRAP: ref. 4791/Z - BUCKLE: ref. EU/BUCKLEBZ

PRICE:

SPECIAL

NEW YORK 45MM 925 DIAMOND

REF. NY925QR SPECIAL EDITION

A prestigious jewel result of the Italian handmade tradition progressing over time. On the case, made with solid 925 Sterling Silver, appears the fine chiselling of its modern engineering marvels. The Brooklyn Bridge on one side and the Empire State Building on the other. The imposing charm of New York is imprinted on 1 of 1 Special Edition watch. Different one from another thanks to the meticulous care with which each creation has been individually hand treated, with the love for details of our Tuscan artisans.

MOVEMENT
automatic mechanical SW200. 26 rubies.

FUNCTIONS
hours, minutes, seconds.

CASE
in pure aged 925 silver, untreated and finely handcrafted, with lateral chisellings, Brooklyn Bridge on one side and the Empire State Building on the other. Hand-chiseled silver bezel. 45 mm diameter. Weight of total silver used 124 gr.

CROWN
crown placed on the left side of the case and embellished with a black diamond, caliber between 1.30 and 2.00.

BACK
in 925 silver finished by hand, sealed with seven external screws, with the Statue of Liberty, lasered. Laser-engraved QR code to provide access to an exclusive digital experience via smartphone.

DIAL
lasered, in pure 925 silver, with indexes and numbers in relief. Hands in painted and brushed metal.

CRYSTAL
sapphire with anti-reflective treatment.

STRAP
black strap in selected and hand-crafted alligator leather, with skate fish insert. Handmade 925 silver buckle. Silver buckle weight 8,50 gr.
Width: 20/20 mm.
STRAP: ref. 4791/Z - **BUCKLE:** ref. EU/BUCKLE925



PRICE:

SPECIAL

NEW YORK 45MM BRONZE DIAMOND

REF. NYBZQR SPECIAL EDITION

A prestigious jewel result of the Italian handmade tradition progressing over time. On the case, made with naturally aged bronze, appears the fine chiselling of its modern engineering marvels. The Brooklyn Bridge on one side and the Empire State Building on the other. The imposing charm of New York is imprinted on 1 of 1 Special Edition watch. Different one from another thanks to the meticulous care with which each creation has been individually hand treated, with the love for details of our Tuscan artisans.

MOVEMENT
automatic mechanical SW200. 26 rubies.

FUNCTIONS
hours, minutes, seconds.

CASE
in naturally aged bronze, finely handcrafted, with lateral chisellings, the Brooklyn Bridge on one side and the Empire State Building on the other. Hand-chiseled bronze bezel. 45 mm diameter. Weight of total bronze used 108 gr.

CROWN
crown placed on the left side of the case and embellished with a black diamond, caliber between 1.30 and 2.00.

BACK
in naturally aged bronze finished by hand, sealed with seven external screws, with the Statue of Liberty, lasered. Laser-engraved QR code to provide access to an exclusive digital experience via smartphone.

DIAL
lasered, in naturally aged bronze, with indexes and numbers in relief. Hands in painted and brushed metal.

CRYSTAL
sapphire with anti-reflective treatment.

STRAP
black strap in selected and hand-crafted alligator leather, with skate fish insert. Handmade naturally aged bronze buckle. Bronze buckle weight 7,50 gr.
Width: 20/20 mm.
STRAP: ref. 4791/Z - **BUCKLE:** ref. EU/BUCKLEBZ



PRICE:

SPECIAL

BLACK SWAN 45MM

REF. 8000



Case 45 mm, 18k Gold, white and black Diamonds.
One of the most exclusive and luxurious timepieces in the brand's collection. 45 mm case, made from 18 carat gold and completely covered in 11K diamonds. The diamonds differ in size, with some set backwards for a spiked look.

MOVEMENT

automatic mechanical. Personalized rotor in gold 22K.

FUNCTIONS

hours, minutes, seconds, date.

CASE

solid 18K gold, satin hand finish, 45 mm diameter, yellow gold (2N). Distinguishing crown on left side, with a patented protective device. 18K gold cap crown. Gold total weight 108.25 gr. White and black diamonds, patiently set one by one on the case and buckle. Reversed diamonds on the carrure.

BACK

18K solid gold, sealed with 8 external screws.

DIAL

with visible ruby. The dial is made up of two superimposed dials, one in 18K gold and the other cut and treated with high technology composite opaque black pigments, also used in the production of military devices.

CRYSTAL

high quality sapphire, fumé.

STRAP

hand made and hand finished alligator black leather, square scale, 18K gold tongue buckle, with black diamonds set on the side of the buckle.

Width: 20/20 mm.

STRAP: ref. 1659/Z - BUCKLE: ref. 5525/D



PRICE:

CUSTOM-MADE

Italo Fontana has been satisfying the many requests for customization for some time. From celebrities to Italian and international special forces U-BOAT increases its "special edition" collection!



CUSTOM-MADE
CAVALLERIA TOSCANA

CUSTOM-MADE
UK PROJECT



CUSTOM-MADE

ITALIAN SPECIAL FORCES



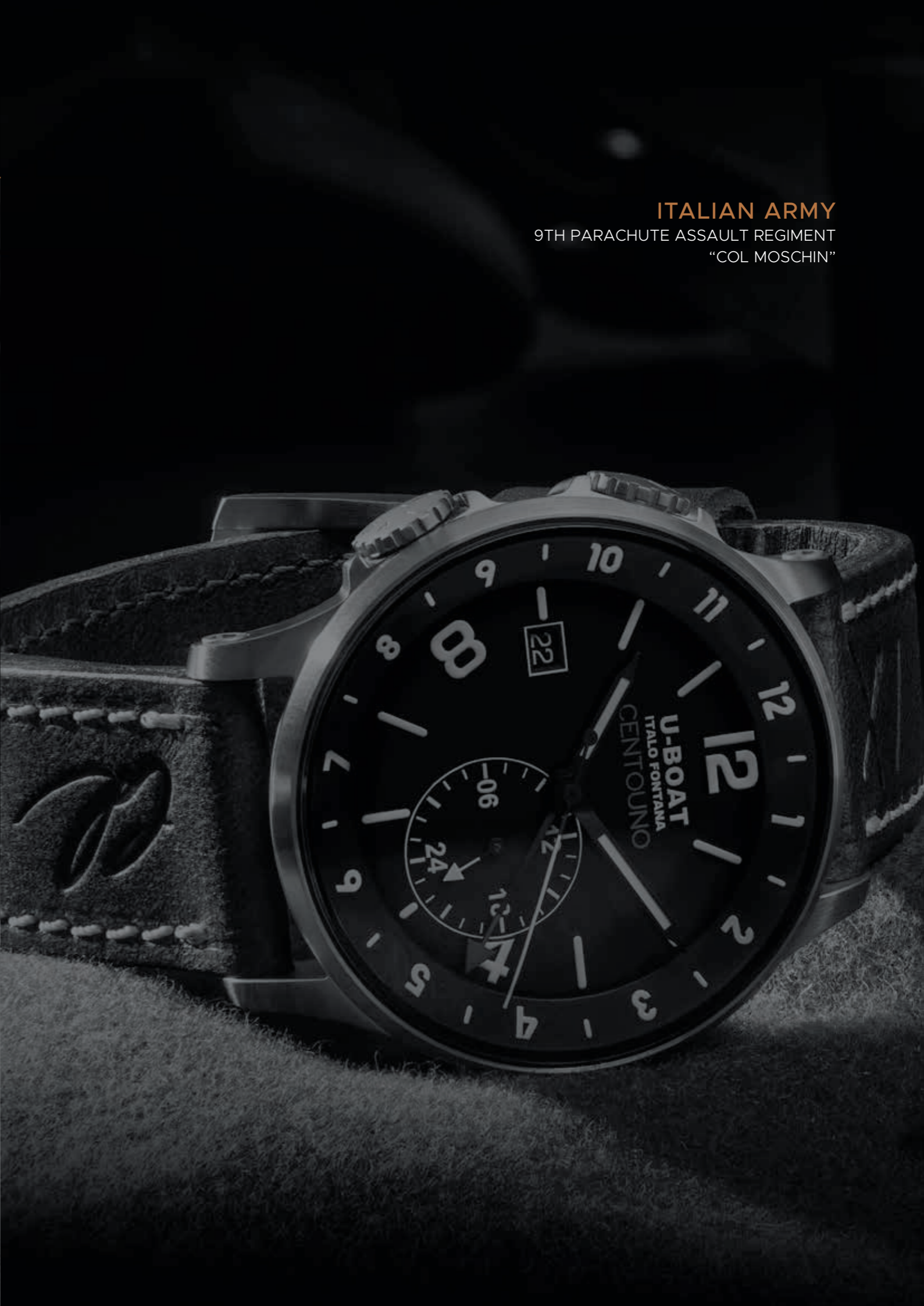
GIS
GRUPPO INTERVENTO SPECIALE
40° anniversary



CARABINIERI



ITALIAN ARMY
9TH PARACHUTE ASSAULT REGIMENT
"COL MOSCHIN"



ITALIAN ARMY
9TH PARACHUTE ASSAULT REGIMENT
"COL MOSCHIN"

CUSTOM-MADE

POLIZIA DI STATO



POLIZIA DI STATO

170TH ANNIVERSARY OF THE FOUNDING OF THE POLIZIA DI STATO.
40TH ANNIVERSARY FOR EQUAL OPPORTUNITIES FOR WOMEN
IN THE POLIZIA DI STATO.

U-BOAT HEAD OFFICE

Via Pesciatina, 751 H Gragnano, Capannori - 55010 Lucca - Italy

Tel: +39 0583 469288 - Fax: +39 0583 462249

www.uboatwatch.com - info@u-boatwatch.com

The oily fluid inside the models Darkmoon and Capsoil may be subject to slight changes in shade due to the natural change of the liquid.

The images shown in this catalogue may be slightly different from the related products.

